



APPLIED MEASUREMENTS LTD.
Transducer Specialists...

+44 (0) 118 981 7339

info@appmeas.co.uk

<https://appmeas.co.uk>

T24LOG100 FREE Downloadable Software

Key Features:

- View & Log Data from up to 100 Channels of Data
- Build a Live Visual Report
- View Results on PC, Tablets, iPads and Smartphones
- Configure Channels, Communication Settings, Title & Descriptions
- Create Customised Reports
- Defined Algorithms and Maths Function
- Visual & Audible Alarms
- Log on Demand, Pre-Set Intervals & Manually
- Minimum Software Requirements:
Dual Core 1.8GHz Processor



The [T24LOG100 software](#) is FREE to download and is designed for use with the T24 range of telemetry instrumentation. The software enables the viewing and logging of up to 100 channels of data. Various maths functions can be setup on separate channels with user defined algorithms, for example, a display can show the value from a single T24 transmitter module or the sum of multiple transmitters. The data can then be displayed on multiple devices on the same network via built-in web server, plus it can also supply JSON data on demand.

With the T24LOG100 software you can set automatic logging or logging at pre-set intervals, on entering and leaving a pre-set overload and also during an overload. The data is saved in a CSV file for spreadsheet import allowing you to view and manipulate in MS Excel and other spreadsheet and data analysis programs.

The easily configurable T24LOG100 software allows you to assign alarm functions for individual channels. These can be both visual and audible. In addition, you can set automatic logging or logging at pre-set intervals.

The graphics function in the software allows you to import drawings, images and schematics to build a live visual representation of the data. The data can be displayed in a variety of formats including digital displays and bars. Supported image formats include JPG, GIF, PDF and DXF. These images can also be incorporated into the reports generated by the T24LOG100 software. Customised company branding is available as an optional extra including company logo, colour scheme and your contact details.

The T24LOG100 software is compatible with all T24 transmitter modules and has the same functions as the previous T24LOG24 software plus many additional extras.

The T24LOG100 software is compatible with Windows XP, Vista, Windows 7 and Windows 8. Please [contact our sales team](#) for more information.



APPLIED MEASUREMENTS LTD.

Transducer Specialists...

+44 (0) 118 981 7339

info@appmeas.co.uk

<https://appmeas.co.uk>

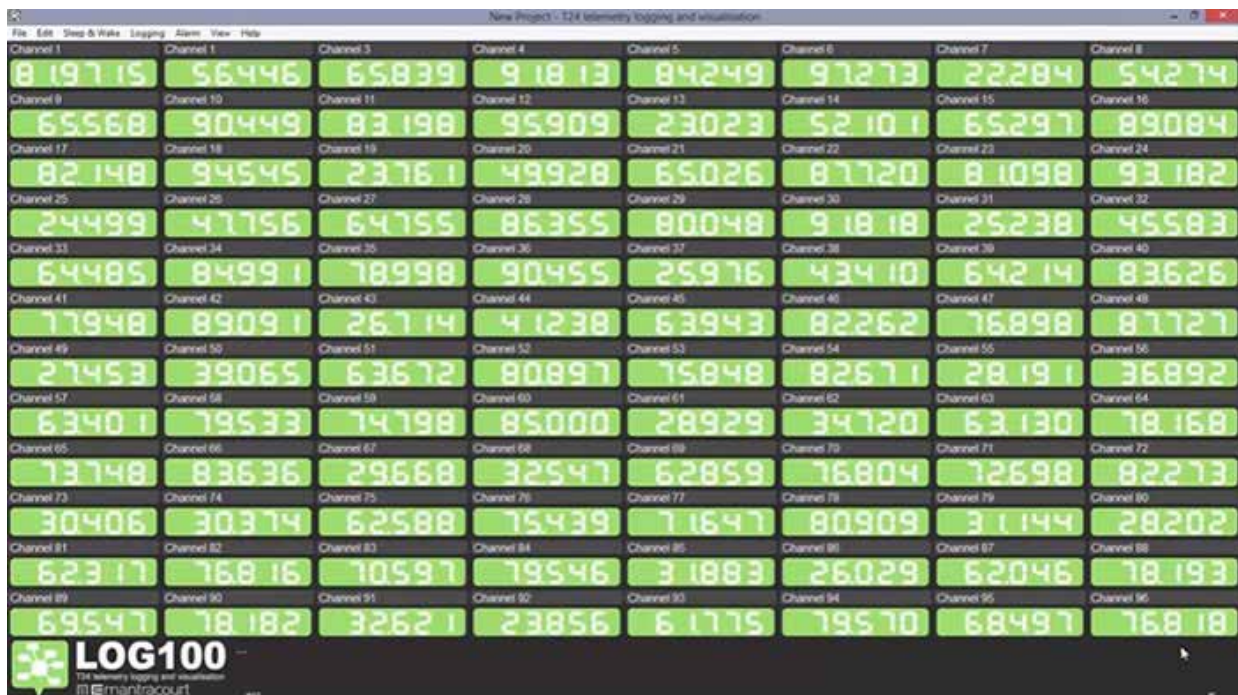
Industries:

- Civil Engineering
- Agriculture
- Marine
- Industrial Processing
- Waste Management
- Alternative Energy
- Construction
- Lifting & Handling
- Automotive
- Silo & Weighing Industry
- Torque Measurement

Applications:

- Test & Measurement
- Torque Measurement
- Load & Force Measurement
- Pressure Measurement
- Displacement & Position Measurement
- Large Structure Relocation
- Farm Weighing System
- Mast Force Monitoring
- Racing Yachts
- Prop Supports in Dry Dock
- Consistency in Repeatable Weld Joints
- Monitoring Peak Loads of Advertising Banners
- Steering Torque Sensors for Assessment Situations

The T24LOG100 software can display up to 100 channels of data.



The T24LOG100 software can be easily adjusted to show any number of channels up to 100. So if you only have 20 channels of data you can resize the window to show just the 20 channels. These channels can be programmed to calculate a number of maths functions specified by you, making the software specific to your application and requirements. For example, a display can show the value from a single T24 transmitter module or the sum of multiple transmitters.

Further configuration options are shown on the following page.

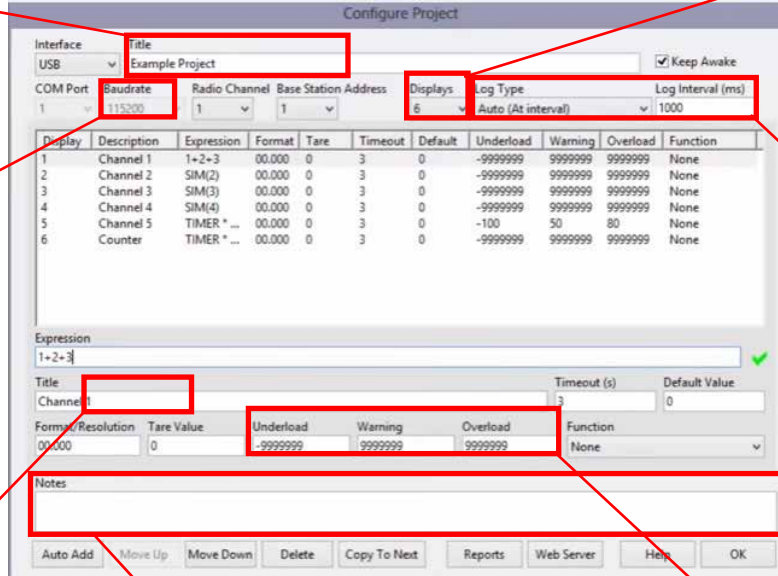


Configurations Options to Suit Your Application:

Main title can be customised.

Baudrate can be set for individual channels ranging from 9600 to 460800.

Channel descriptions enable you to quickly and easily identify individual channels of data.



Number of channels can be adjusted (up to 100) to suit your application.

Log Intervals allows you to adjust the period between data capture. Log type allows you to set logging at automatic or pre-set intervals.

Alarm tolerances can be set for individual channels. 3 levels of alarm - underload, warning and overload.

Additional detailed notes can be added if required.

All these settings can be saved and loaded at any time.

Screenshot of data capture with alarm function set.



Channel 5 has gone over customer set tolerance.

From this screen you can drill down to see further information for each individual channel.



The drill down screen displays the channel's live statistics and a visual trend chart, up to 10,000 data points are stored.

This chart can also be saved and copied into an excel spreadsheet.



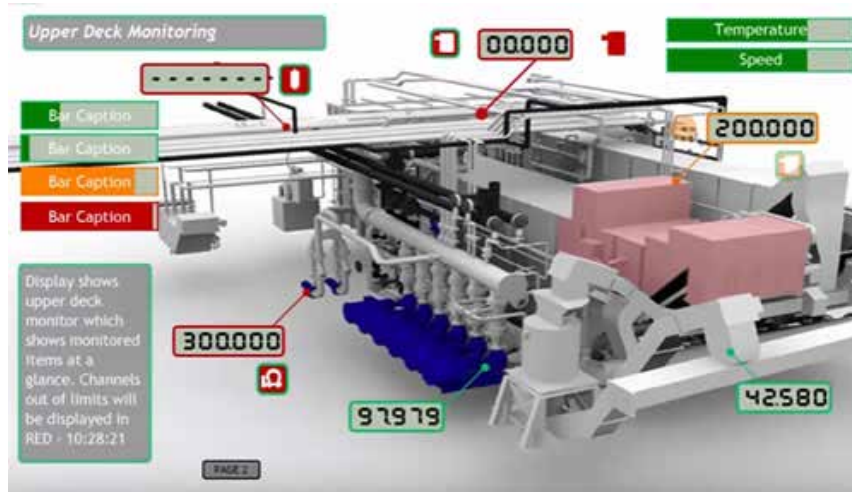
APPLIED MEASUREMENTS LTD.
Transducer Specialists...

+44 (0) 118 981 7339

info@appmeas.co.uk

<https://appmeas.co.uk>

Graphics Function Enables Creation of Live Visual Representation:



By uploading a visual graphic i.e picture, drawing or schematic, the T24LOG100 software enables you to display a live visual representation of the data. Supported image formats include JPG, GIF, PDF, DXF.

Log Data to CSV File for Easy Viewing and Manipulation in MS Excel:

	A	B	C	D	E	F	G	H	I	J	K	L	M	N	O
1	Date	Time	Elapsed mS	Channel 1	Channel 2	Channel 3	Channel 4	Channel 5	Channel 6	Channel 7	Channel 8	Channel 9	Channel 10	Channel 11	Channel 12
2	29/06/2016	15:53:52	1021	-0.045	-0.067	-0.045	-0.045	-0.045	-0.031	-0.045	-0.045	-0.045	-0.045	-0.001	-0.045
3	29/06/2016	15:53:53	2038	-0.038	-0.06	-0.024	-0.024	-0.024	-0.01	-0.024	-0.024	-0.024	-0.024	0.02	-0.024
4	29/06/2016	15:53:54	3142	-0.009	-0.03	-0.009	-0.009	-0.009	0.004	-0.01	-0.01	-0.01	-0.01	0.034	-0.01
5	29/06/2016	15:53:55	4228	-0.018	-0.041	-0.019	-0.019	-0.019	-0.005	-0.012	-0.012	-0.012	-0.012	0.033	-0.012
6	29/06/2016	15:53:56	5341	-0.024	-0.046	-0.024	-0.025	-0.025	-0.011	-0.025	-0.025	-0.025	-0.025	0.02	-0.025
7	29/06/2016	15:53:58	6549	-0.033	-0.054	-0.033	-0.033	-0.033	-0.018	-0.032	-0.032	-0.032	-0.032	0.013	-0.032
8	29/06/2016	15:53:59	7598	-0.03	-0.052	-0.03	-0.03	-0.03	-0.016	-0.03	-0.03	-0.03	-0.03	0.014	-0.03
9	29/06/2016	15:54:00	8703	-0.03	-0.052	-0.03	-0.031	-0.031	-0.016	-0.031	-0.031	-0.031	-0.031	0.014	-0.031
10	29/06/2016	15:54:01	9759	-0.035	-0.057	-0.035	-0.035	-0.035	-0.021	-0.036	-0.036	-0.036	-0.036	0.009	-0.036
11	29/06/2016	15:54:02	10862	-0.045	-0.067	-0.045	-0.045	-0.045	-0.031	-0.045	-0.045	-0.045	-0.045	-0.001	-0.045
12	29/06/2016	15:54:03	11896	-0.046	-0.067	-0.046	-0.046	-0.046	-0.031	-0.046	-0.046	-0.046	-0.046	-0.001	-0.046

Screenshot of a 12 channel report in MS Excel.

The DSCLOG24 software enables you to log the data to a CSV file for import into MS Excel and other spreadsheet and data analysis programs for evaluation and manipulation as required.

Associated Products:



[DCell Miniature Load Cell Digitiser](#)



[DSC Load Cell Converter to RS232 or RS485 Digital Signal](#)



[DSC-USB USB Signal Digitiser](#)