

1 Software installation

- Put the provided software CD into the CD drive of your PC.
- Open the file "BD LOG Setup x.x.exe".
- Install the program.

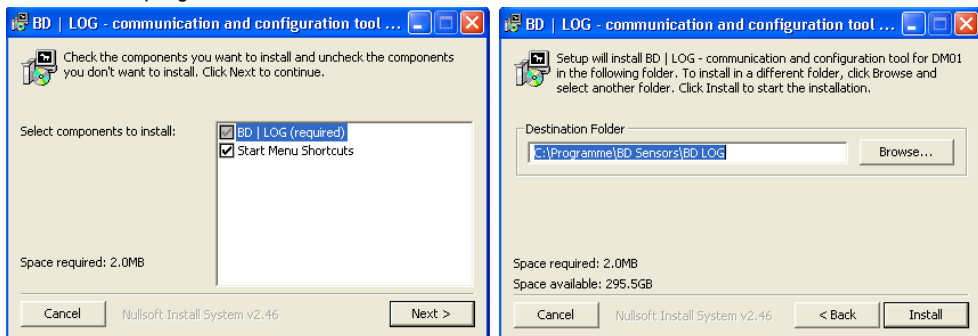


Fig. 1

Fig. 2

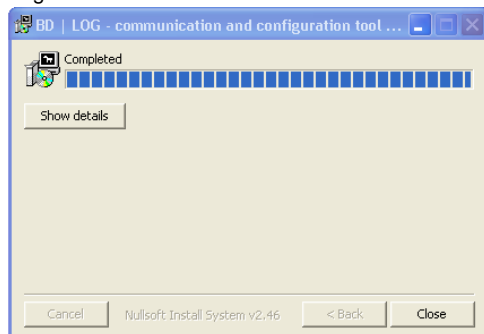


Fig. 3

- Fig. 1: To create a Start menu folder (recommended) for the program, check „Start Menu Shortcuts“. Check all selected options and click „Next“.
- Fig. 2: In the following step the program path has to be defined. The default path (C:\Programme\BD Sensors\BD LOG) will be recommended. For installing the program into another path click "Browse...". As soon as you have defined the program path, click "Install".
- Fig. 3: If you want to see more details during the installation click "Show details". Each step (f.e. copying of files) will be shown in the text field below. As soon as installation routine is over, click "Close".

After the installation go to "Start" → "Program Files" → "BD Sensors" and run the program.

2 Installation of the digital pressure gauge

If you are connecting the digital pressure gauge with the provided USB-cable with integrated USB converter to your PC for the first time, a "Found new hardware wizard" window appears. Follow the device manager's instructions (further for "Windows XP" operation system software described).

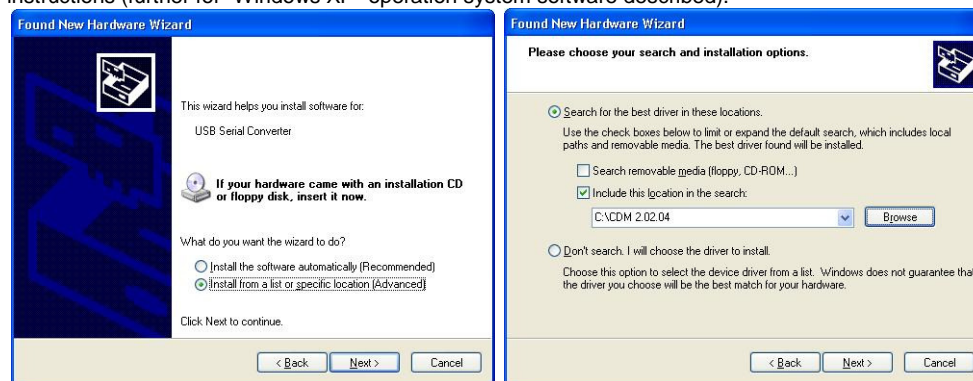


Fig. 5

Fig. 6



Fig. 7



Fig. 8

- Fig. 5: Check "Install from a list or specific location"!
- Fig. 6: Put in the path that was selected during driver extraction!
- Fig. 7: In the first wizard session, a new USB-Device will be installed.
- Fig. 8: Click "Finish"!