



APPLIED MEASUREMENTS LTD.
Transducer Specialists...

+44 (0) 118 981 7339

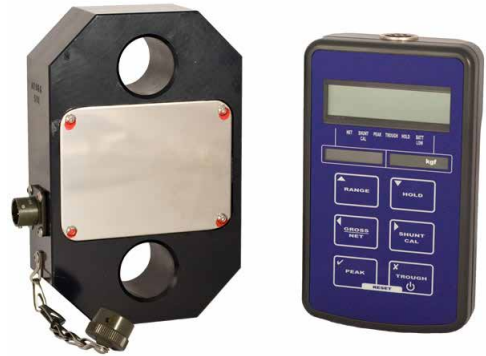
info@appmeas.co.uk

<https://appmeas.co.uk>

ETW Wired Lift Link Tension Load Cell System

Key Features:

- Capacities 1 tonne to 100 tonnes
- Designed for use with Standard Lifting Shackles
- Sealed to IP65
- Robust Construction
- Low Weight Compared to Other Manufacturers Models
- Supplied with Rugged Carry Case and 15metre Connecting Cable
- 3 Year Warranty



For the measurement of cable tension, under-hook crane weighing and lifting gear applications.

The ET wired lift link load cells are designed to be used as a load monitoring link for cable tension measurement, under-hook crane weighing and lifting gear weighing applications. The ET load cell is sealed to IP65 protection rating giving it excellent waterproofing properties when using outside.

The ET wired lift link load cell is supplied as a calibrated system in the required engineering units and comes with a TR150 handheld digital indicator plus 15 metres of connecting cable, in a rugged carry case. 1 or 2 channel versions are available which enables the system to be read in different engineering units (readout in tonnes only is standard). For applications where it is not possible to run the cable between the load cell and the indicator we offer the [ET24 telemetry wireless version](#).

Options:

- Bow or D Type Shackles
- Wireless Telemetry Version
- Higher Capacity Versions
- 1 or 2 Channel Versions Available
- USB Version (via DSC-USB)
- TEDS (Transducer Electronic Data Sheet)
- TEDS Allows Plug & Play with TEDS enabled Instrumentation.
- Single or Multi-Channel PC-Based Monitoring & Data Logging System.

Applications:

- Lifting Gear Weighing
- Cable Tension Measurement
- Under-Hook Crane Weighing
- In-Line Force or Load Measurement
- Boat Weighing
- Car Weighing
- Lifting Gear Weighing
- In-line Weighing Applications
- Crane Monitoring



APPLIED MEASUREMENTS LTD.

Transducer Specialists...

+44 (0) 118 981 7339

info@appmeas.co.uk

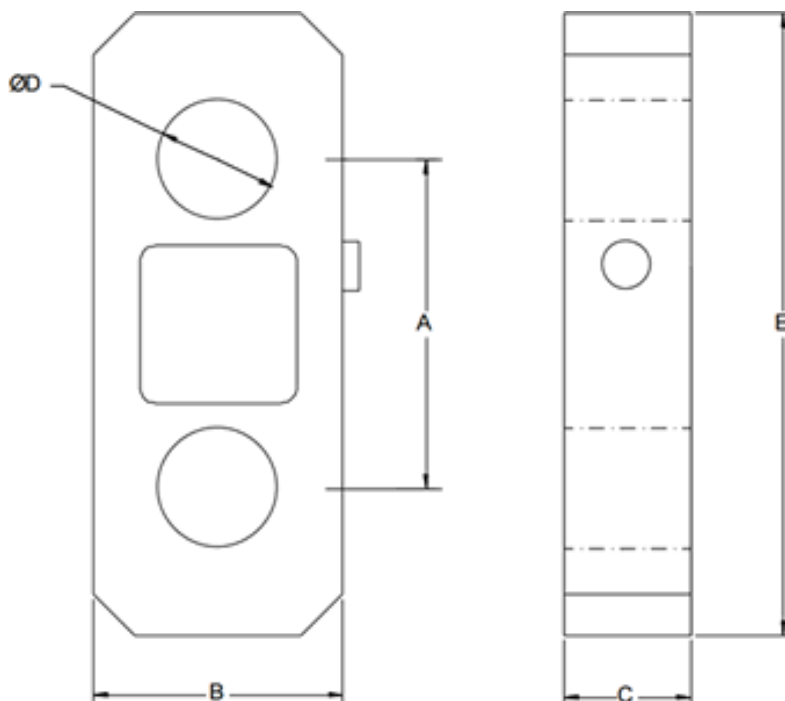
<https://appmeas.co.uk>

Specification:

Range	tonnes	0-1, 0-2, 0-5, 0-12, 0-25, 0-50, 0-100*
Operating Modes	Tension Only	
Accuracy	±%/Rated Capacity	<±0.25% (<±0.3% above 100te)
Operating Temperature Range	°C	-10 to +50
Safe Overload	% of Rated Capacity	150
Ultimate Overload	% of Rated Capacity	500
Safety Factor		5:1
IP Rating (Environmental Protection)		IP65
Construction Material		Anodised Aluminium Alloy
Connections		Locking Connector + 15m Cable
*For capacities over 100t please contact sales		

Dimensions (mm):

RANGE (t)	A	B	C	ØD	E	WEIGHT kg
0-1	137	105	41.5	30	193	1.5
0-2	137	105	41.5	30	193	1.5
0-5	137	105	41.5	30	193	1.5
0-12	149	105	41.5	38	239	2.0
0-25	160	125	55	53	284	4.5
0-35	175	138	55	60	335	5.5
0-50	198	150	75	73	375	10.0
0-100	275	220	120	100	500	28.0





APPLIED MEASUREMENTS LTD.

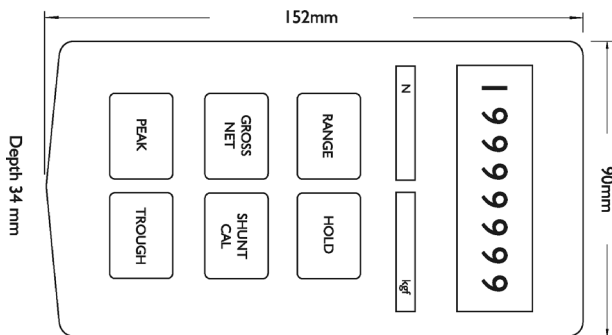
Transducer Specialists...

+44 (0) 118 981 7339

info@appmeas.co.uk

<https://appmeas.co.uk>

CHARACTERISTICS	TR150
Display	7-digit LCD (± 9999999) 10.2mm high
Display Resolution	1:250K @ 1Hz update, 1:65K @ 10Hz update
Accuracy	<0.005% of full scale
Thermal Drift	<25ppm/ $^{\circ}$ C
Operating Temperature	-10 to +50 $^{\circ}$ C
Integral Battery	2xAA Alkaline (re-chargeable – optional)
Battery Life	40 hours (with 350 ohm sensor)
Keypad	Tactile with rim embossed keys
Environmental Protection	IP65
Relative Humidity	95% non-condensing
Weight	260 grams approx.



Ordering Codes:

Core Product	Capacity + Engineering Units	Cable Length (m)	Specials Code	Example Result
ETW	1t	015	000	ETW-1t-015-000
ETW	2t	015	000	ETW-2t-015-000
ETW	5t	015	000	ETW-5t-015-000
ETW	12t	015	000	ETW-12t-015-000
ETW	25t	015	000	ETW-25t-015-000
ETW	35t	015	000	ETW-35t-015-000
ETW	50t	015	000	ETW-50t-015-000
ETW	100t	015	000	ETW-100t-015-000

Associated Products:



[ET24 Telemetry Lift Link Load Cell](#)